

ECV Euro-Clip Connector 31560

CE 10/2025

Areas of application:

For the connection of two pipes with two Euro Clips and an ECV.

Installation Guide:

- Attach one EC onto the retaining end of the ECV,
- from the side and with a light twist, insert the thorn of the ECV into the hole of the second EC,
- lock onto the second EC by twisting it parallel or at a 90 degree angle to the first EC.
- Attach one EC to the existing installed pipe. Insert the next pipe into the second EC.

Product details:

Colour	light grey
Content pack/box	200 / 3.000

Mounting and usage instructions:

Attention: Working Temperature at min. + 5° C

Product benefits/properties:

Add additional levels of pipes underneath each other and therefore boost your efficiency. The ECV allows for the installation of parallel pipes, or at a 90 degree angle.

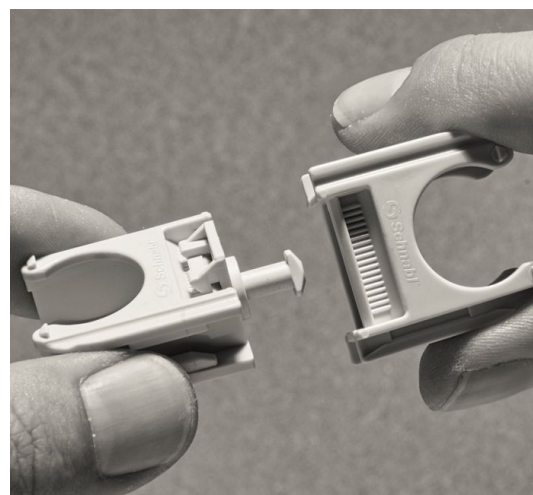
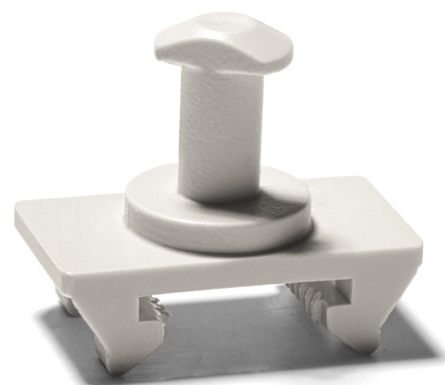
- Compatible with all Schnabl Euro Clips (EC 16, EC 20, EC 25, EC 32, EC 40, EC 50)
- Fast and easy installation
- Reliable fastening

Technical data:

Material	PA 6, UV stabilised Temperature range: -20 °C up to +85 °C silicon-free halogen-free
----------	------------------------------------------------------------------------------------------------------

Weight per piece 1,20 g

GTIN (EAN)



With the ECV you can easily connect two Euro Clips ...



... to add additional pipes in narrow spaces.



Schnabl Stecktechnik GmbH, Bahnhofplatz 1, po box 63, 3100 St. Pölten, Austria
Telephone +43 2742 22167-0, office@schnabl.works, www.schnabl.works



Made in Austria

