

ESV Euro connector 34430



Areas of application:

For the installation of pipes on all major cable trays with round holes with a sheet thickness of 0.5 to 1.1 mm.

Installation Guide:

EC in combination with ESV:

- Click the EC to the ESV
- Put the EC with ESV in the round hole of the cable tray.
- Lock this combination by twisting a 45°-turn
- The EC clamp is adjustable after mounting to the ESV
- Push the pipe into the EC clamp
- Cables can be attached to the ESV with a cable tie

Product details:

Colour:	light grey
Content pack/box	200 / 3.000
Metal thickness	0,5 - 1,1 mm

Mounting and usage instructions:

Simply connect the EC Euro Clips to the ESV and install it in a round hole of the cable route. The EDV can be mounted sideways or on the underside of a cable route.

Product benefits/properties:

The ideal way to relieve full cable routes, is a separate cable routing on / beside / under the cable route (for additional cables, data cables, etc.). The conduit itself acts as an electromagnetic divider.

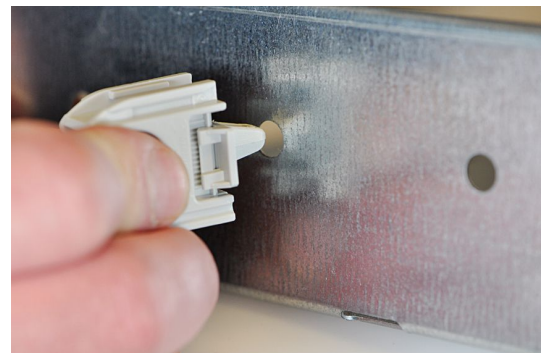
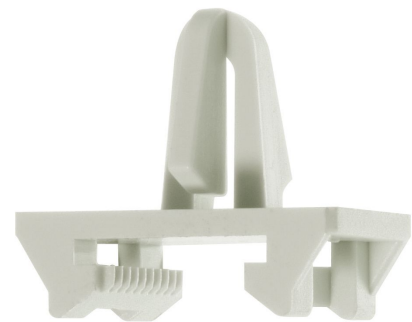
- Applicable for all crossings on the cable route underside
- Several Euro-clips can be attached with only one ESV - this results in saved time and money.
- Compatible with all Schnabl Euro Clips (EC 16, EC 20, EC 32, EC 40, EC 50)
- Fast and easy installation
- Reliable fastening - tensile strength 40 kg

Technical data:

Material	PA 6, UV stabilised Temperature range: -20 °C up to +85 °C silicon-free halogen-free
----------	---

Weight per piece 0,80 g

GTIN (EAN)



Ideal for fixing pipes to all conventional cable conduits with round holes.



Schnabl Stecktechnik GmbH
Bahnhofplatz 1, Postfach 63, 3100 St. Pölten, Austria
Telefon +43(0)2742/22167-0, Telefax +43(0)2742/22167-50
office@schnabl.works, www.schnabl.works

 **Schnabl**[®]
time saving products

Stand: 2/2020